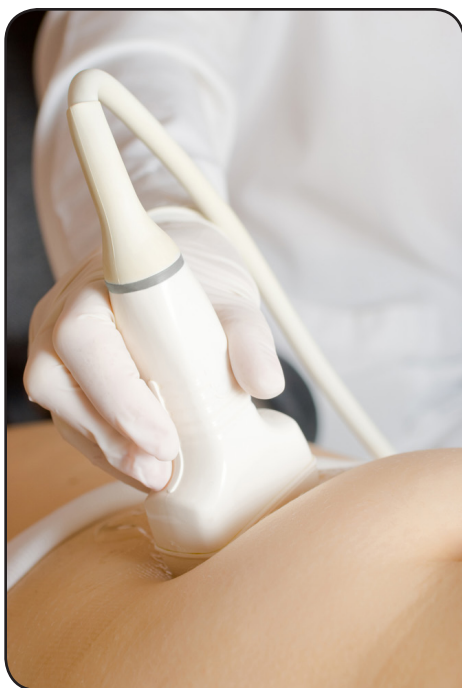




# Pelvic Ultrasound

## Patient Information



### **What is a Pelvic Ultrasound:**

Ultrasound uses sound waves that bounce off of a body part to make a picture. A pelvic ultrasound (or sonogram) is used to look at organs in the pelvis such as:

- Bladder
- Cervix
- Fallopian tubes
- Ovaries
- Uterus

Because radiation is not used, it is very useful in pregnancy check-ups.

### **Why is a Pelvic Ultrasound Done:**

A pelvic ultrasound may be used for a gynecological reasons, or to look at a pregnancy.

#### *Gynecological Reasons:*

- To find problems such as ovarian cysts, fibroids (tumors in the uterus), lesions (organ damage), etc.
- To find what is causing a pelvic mass, such as an ectopic pregnancy (pregnancy that starts in the fallopian tubes).
- To help with other gynecologic exams, such as sonohysterography.
- To look at the pelvic organs.
- To see how the ovaries react to fertility medicines during infertility treatments.
- To find gynecologic cancer.



### **What You Can Expect During the Exam:**

If a transvaginal ultrasound is needed, the technologist may ask you to empty your bladder as best as you can. Then they will ask you to place a small transducer into your vagina. The transducer is shaped to fit into a woman's vagina. Transvaginal exams are used for gynecological reasons to check the pelvic organs for problems. It is also used to find a very early pregnancy that may be hard to see with an abdominal ultrasound. Often a transvaginal ultrasound gives better pictures of the pelvic organs. It is safe and should not hurt.

### **Risks:**

There is a slight risk of infection from a transvaginal ultrasound, but the risk infection is much smaller than the benefits of the exam.

### **Report:**

Results from the exam will not be ready right away. A radiologist will look at your pictures and report back to your health care provider in 24 to 48 hours, Monday through Friday. Your health care provider will give you the results.

### **Directions:**

Waverly Health Center is at 312 Ninth Street, SW in Waverly. Please go through the green entrance and check in at the registration desk. When you have finished your check in, you will be taken to the radiology waiting area.